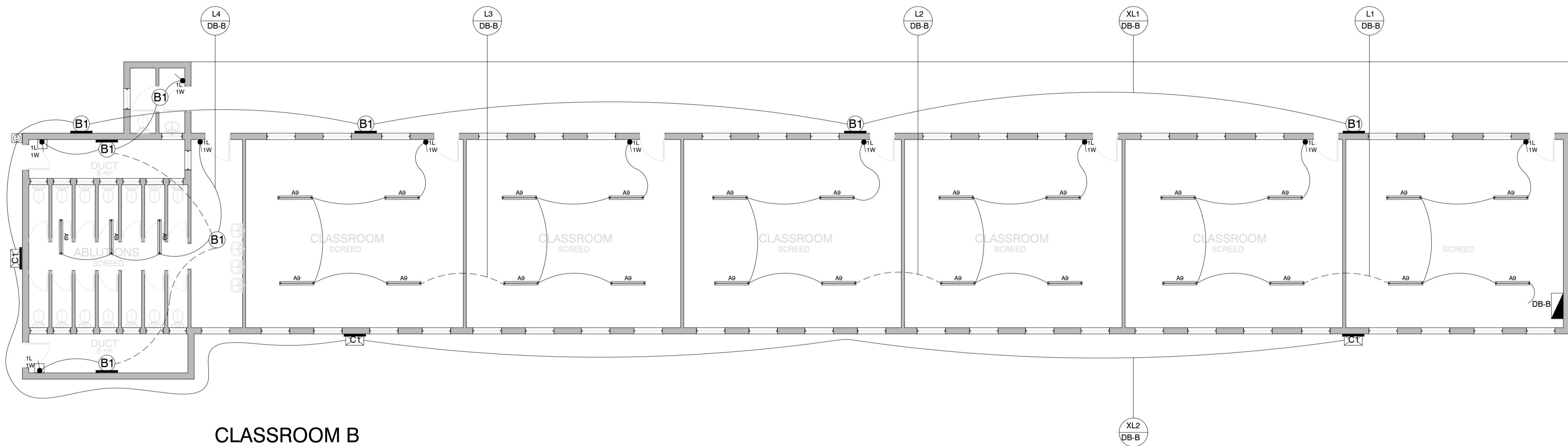
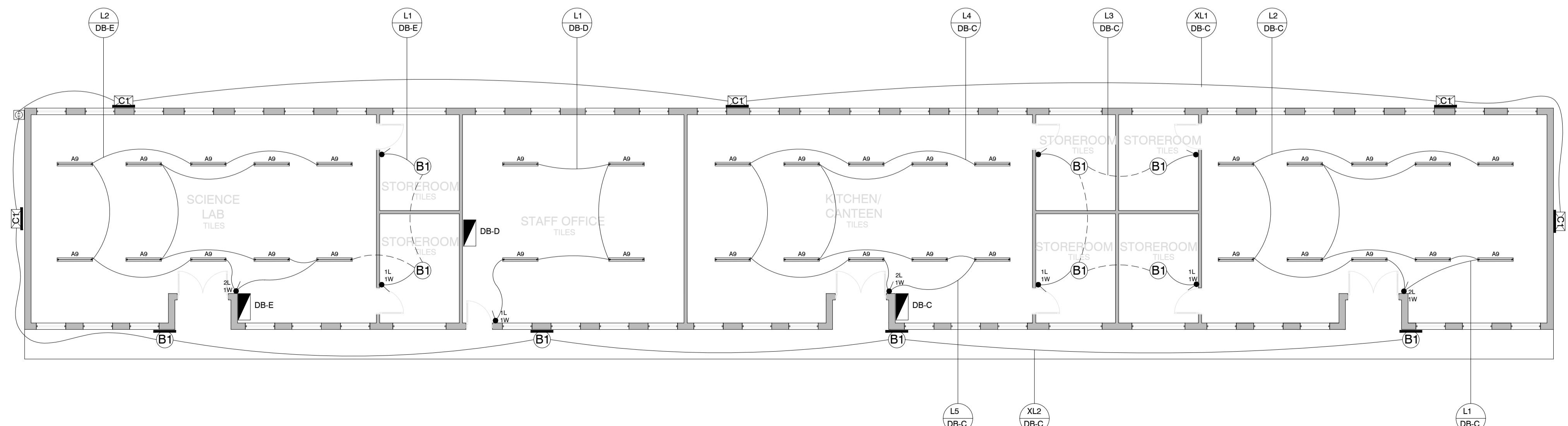


CLASSROOM A
SCALE 1 : 100



CLASSROOM B
SCALE 1 : 100



SCIENCE LAB BLOCK
SCALE 1 : 100

| LEGEND | |
|--------|--|
| | DISTRIBUTION BOARD MOUNTED 2200mm A.F.F.L TO TOP OF DB |
| | TYPE 9 SURFACE MOUNTED IP65 DIE-CAST ALUMINIUM BODY LUMINAIRE (1200mm) COMPLETE WITH LED 20W LAMP (± 2800LUMEN PER LAMP) 4000K, MINIMUM OF 25 000 OPERATING HOURS. |
| | TYPE B1 SURFACE MOUNTED BULKHEAD COMPLETED WITH ELECTRONIC GEAR AND LED 20W (± 2000LUMEN) 4000K, MINIMUM OF 50 000 OPERATING HOURS. |
| | TYPE C1 WALL MOUNTED FLOODLIGHTS 80W (± 10000LUMEN) 4000K, MINIMUM OF 100 000 OPERATING HOURS. |
| | 1 LEVER 1 WAY LIGHT SWITCH MOUNTED 1400mm A.F.F.L |
| | 2 LEVER 1 WAY LIGHT SWITCH MOUNTED 1400mm A.F.F.L |
| | IP66 WEATHER PROOF 1 LEVER 1 WAY LIGHT SWITCH MOUNTED 1400mm A.F.F.L |
| | PHOTOCELL |

NOTES:

| REFERENCE DRAWING | | |
|-------------------|----------------|-----------------------------------|
| NO. | DRAWING NUMBER | DESCRIPTION |
| 1 | 3005 | DB-A AND DB-B SINGLE LINE DIAGRAM |
| 2 | 3006 | DB-C SINGLE LINE DIAGRAM |
| 3 | 3007 | DB-D AND DB-E SINGLE LINE DIAGRAM |
| 4 | 3011 | RETICULATION LAYOUT |

| REVISION | | |
|----------|------|----------|
| NO. | DATE | REVISION |
| | | |
| | | |
| | | |

| LODEMAN HOLDINGS SIGNATURES | | |
|-----------------------------|------|----------|
| NO. | DATE | REVISION |
| | | |
| | | |
| | | |

CLIENT DEPARTMENT SIGNATURES

FACILITY STAMP

FACILITY MANAGER

INFRASTRUCTURE MANAGER

GENERAL MANAGER

Checked by Professional Consultant
Name

Signature Date

SIGPRO
ENGINEERING AND PROJECT MANAGEMENT

DBSA
Development Bank of Southern Africa

NORTHERN REGION

Project:
KZN DOE INFRASTRUCTURE DEVELOPMENT AND MAINTENANCE PROGRAMME

Drawing Description:
DLAMVUZO HIGH SCHOOL CLASSROOM A, B AND SCIENCE LAB LIGHTING LAYOUT PLAN

Drawn: SIGPRO Date: 02/11/2022

Scale/s:
1:100 (A1)

Consultant Drawing Number:
1013-017-3000

DBSA Drawing number
500121952

Stamped by Plans Approval Committee